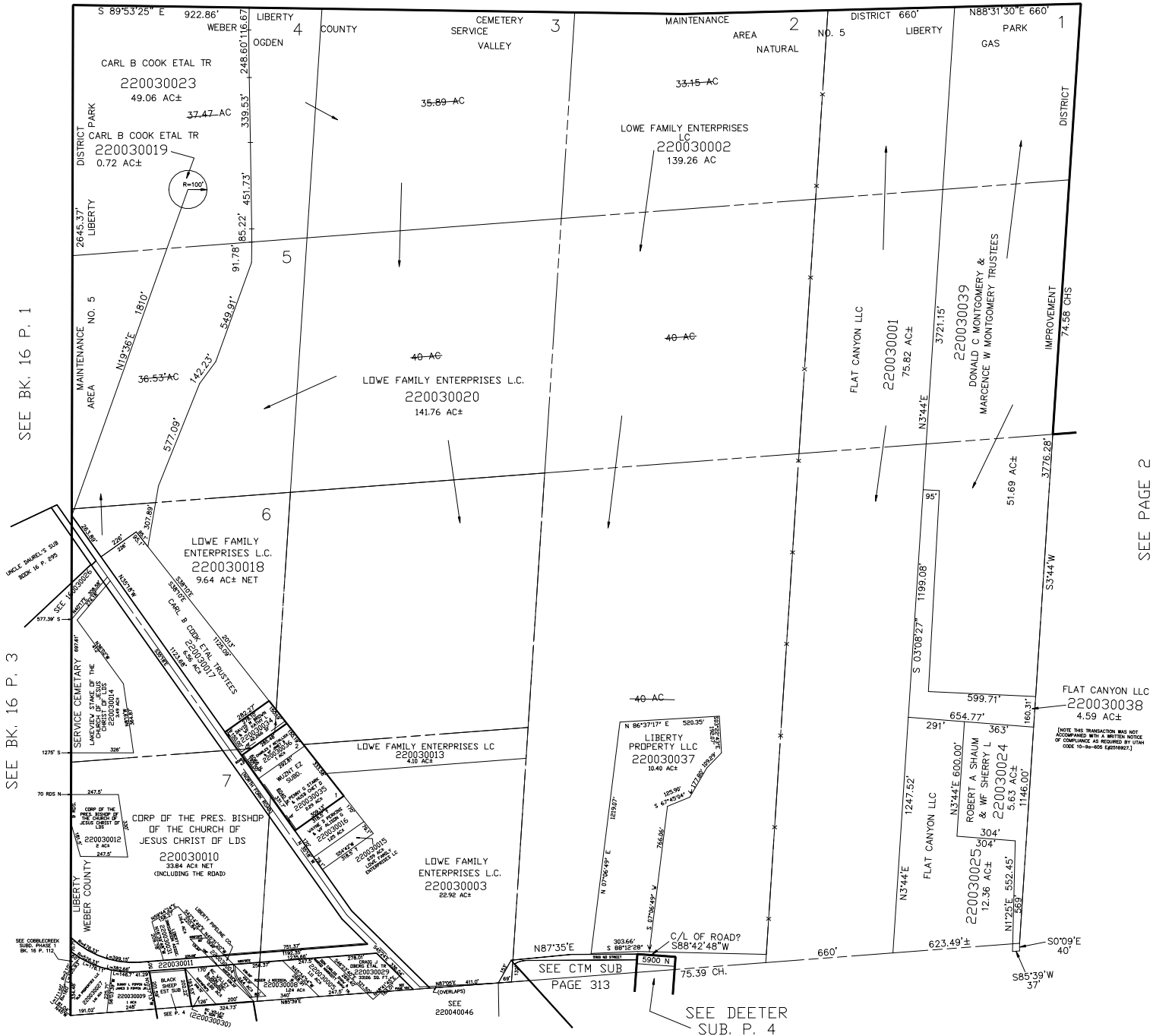


SECTION 6, T.7N., R.1E., S.L.B. & M.

IN WEBER COUNTY
SCALE 1" = 400'

TAXING UNIT: 36

SEE BOOK 23 PAGE 44



SEE BK. 16 P. 1

SEE BK. 16 P. 3

SEE PAGE 2

SEE CTM SUB
PAGE 313

SEE DEETER
SUB. P. 4

SEE PAGE 4